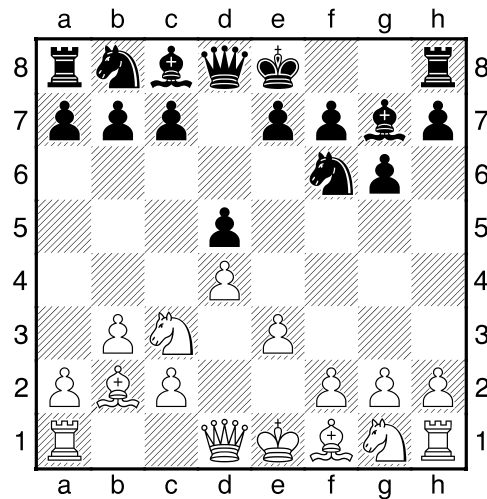


(77) Marlies, Hamers - Theo, Verstappen [D00]

Intern GESS, 13.05.2019
[Deep Fritz 14 x64 (15m)]

[D00: 1 d4 d5: Ongebruikelijke Varianten]

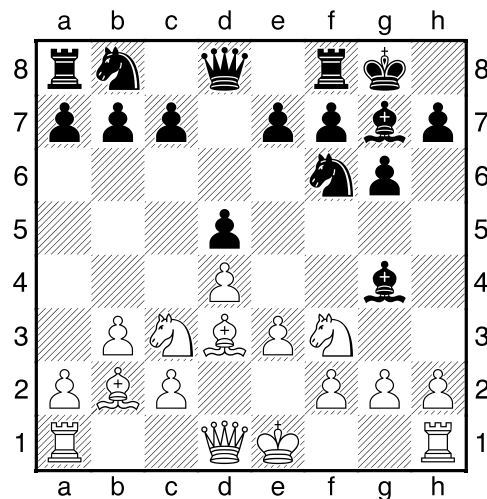
1.d4 d5 2.e3 Pf6 3.Pc3 g6 4.b3 Lg7 5.Lb2 [Diagram



laatste zet uit boek]

5...0-0 6.Pf3 Lg4 [6...c5 7.Ld3³]

7.Ld3 [Diagram

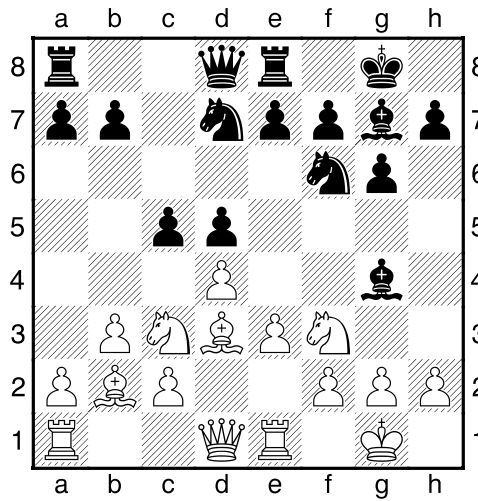


]

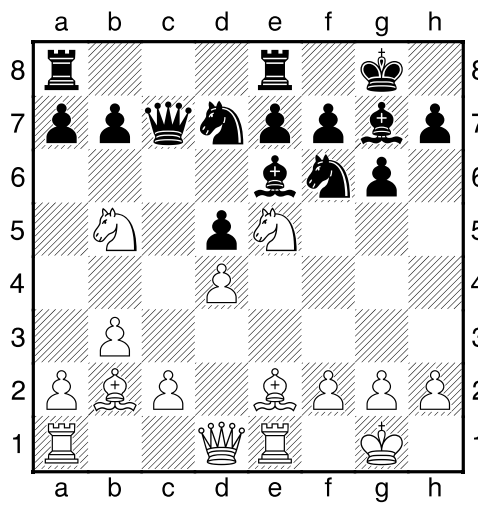
[7.h3 Lxf3 8.Dxf3 c5=]

7...Pbd7 [7...c5 8.h3 cxd4 9.exd4 Lxf3 10.Dxf3³]

8.0-0 Te8 9.Te1 c5 [Diagram



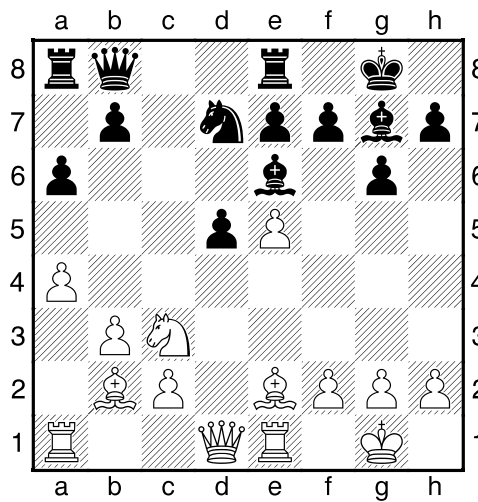
10.Le2 cxd4 11.exd4 Dc7 12.Pe5 Le6 13.Pb5 [Diagram



Wit dreigt met materiaalwinst: Pb5xc7]

13...Db8 14.a4 [14.Lf3 Pxe5 15.dxe5 Pe4=]

14...a6³ 15.Pc3 Pxe5 16.dxe5 Pd7 [Diagram

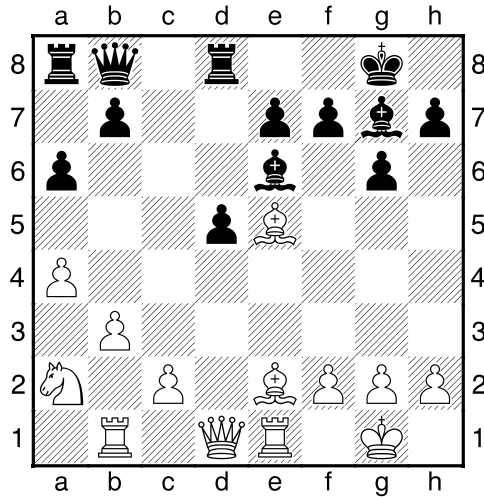


Zwart dreigt met materiaalwinst: Pd7xe5]

[16...Dxe5 17.Lb5 Dd6 18.Lxe8 Txe8³]

17.Pa2 [17.f4 Is de beste kans voor wit. 17...Td8 18.Lf3=]

17...Pxe5μ 18.Tb1 Td8 19.Lxe5 [Diagram

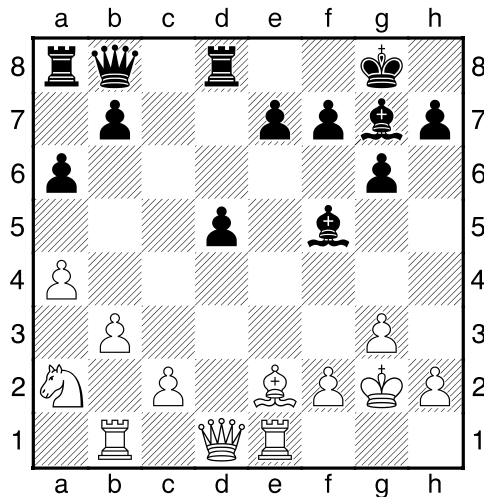


]

[19.Pb4 Dc7μ]

19...Lxe5--+ 20.g3 Lg7 21.Kg2 [21.Lg4 Lxg4 22.Dxg4 e6--+]

21...Lf5 [Diagram



]

[21...h5 22.Pc1--+]

22.Lf3 [22.Ld3 Dd6 23.Lxf5 gxf5--+]

22...e6 [22...Dc7 Hiermee zou zwart definitief uit de problemen zijn. 23.Te2--+]

23.De2 [23.Lg4 Lxg4 24.Dxg4 b5-+]

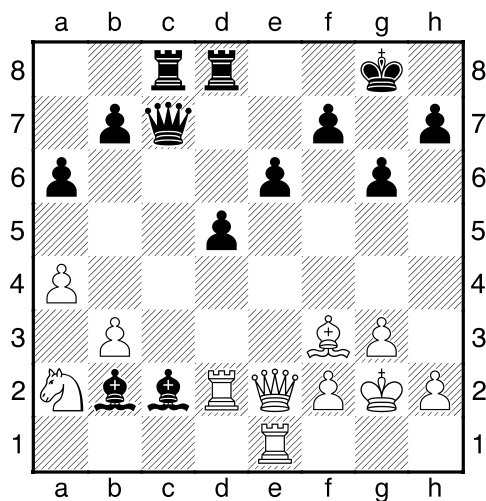
23...Dc7 [23...h5 24.Tbc1-+]

24.Tbc1 [24.g4 Le4! Een mooie ontknoping. 25.Lxe4 dxe4 26.Dxe4 Td4-+]

24...Lb2 [24...e5!? 25.Lg4 Lxg4 26.Dxg4-+]

25.Tcd1 Lxc2 [25...d4 26.Le4-+]

26.Td2μ Tac8 [Diagram



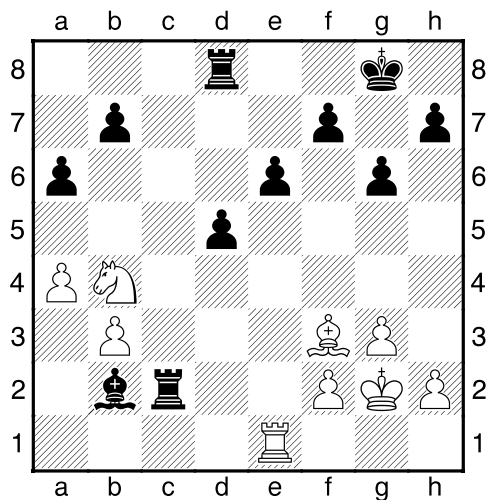
]

27.Txc2?? [Lost niets op.]

[!27.Pb4 Lc3 28.Txc2μ]

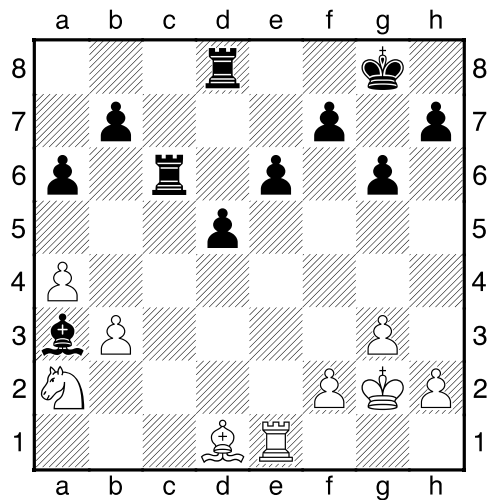
27...Dxc2-+ 28.Dxc2 [28.Dd1 Dit verbetert nauwelijks iets aan de stelling. 28...La3-+]

28...Txc2 29.Pb4 [Diagram



]

29...Tc3 30.Ld1 La3 31.Pa2 Tc6 [Diagram



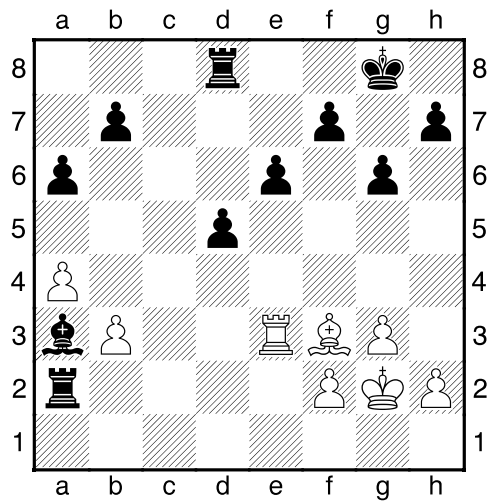
]

[!31...Td3 Lijkt nog beter. 32.b4 Tc8-+]

32.Le2 [32.Te2-+ Hoopt op het onmogelijke.]

32...Tc2 33.Lf3 [33.Pc3 Een vruchteloze poging om het lot te ontlopen. 33...Txc3 34.Ld1 Kg7-+]

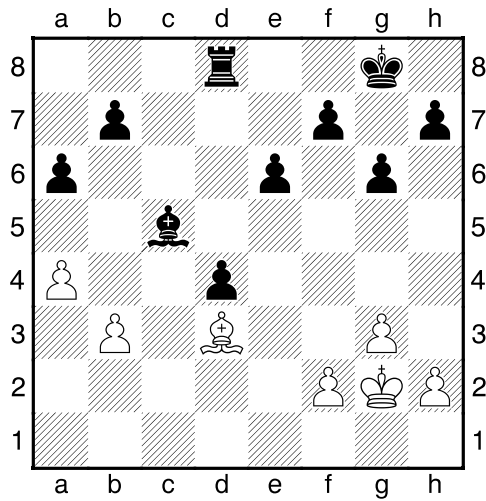
33...Txa2 34.Te3 [Diagram



]

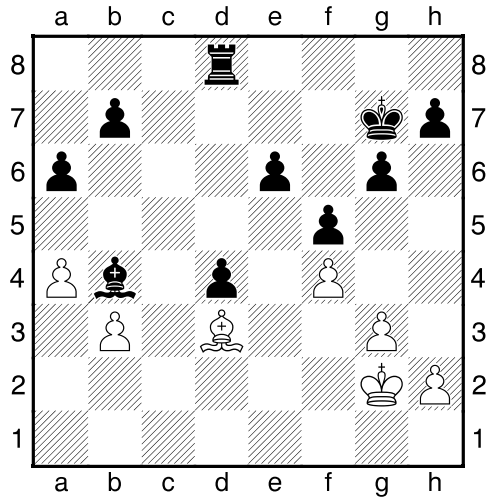
34...Lc5 [34...Tc8!? Maakt de winst nog eenvoudiger. 35.Te2 Txe2 36.Lxe2-+]

35.Te2 Txe2 36.Lxe2 d4 37.Ld3 [Diagram



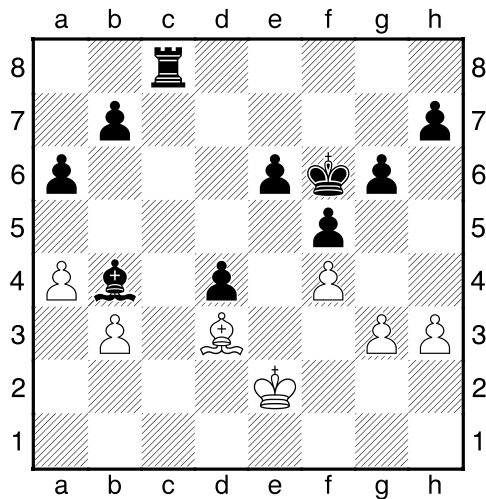
]

37...f5 38.f3 Kg7 39.f4 Lb4 [Diagram



[39...Kf6 Leidt nog sneller tot winst. 40.Kf2-+]

40.Kf3 Kf6 41.h3 Tc8 42.Ke2 [Diagram

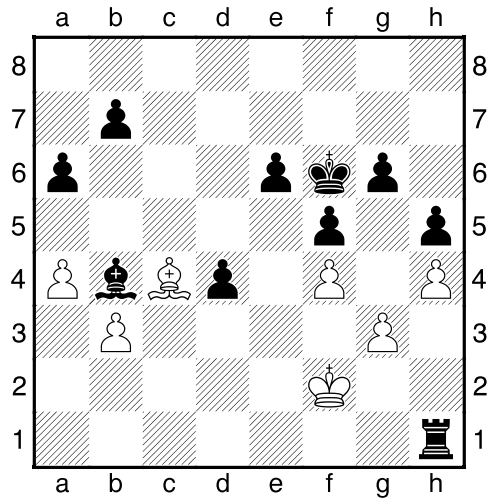


]

42...Tc1 [42...Tc3!? Is nauwkeuriger. 43.Kd2-+]

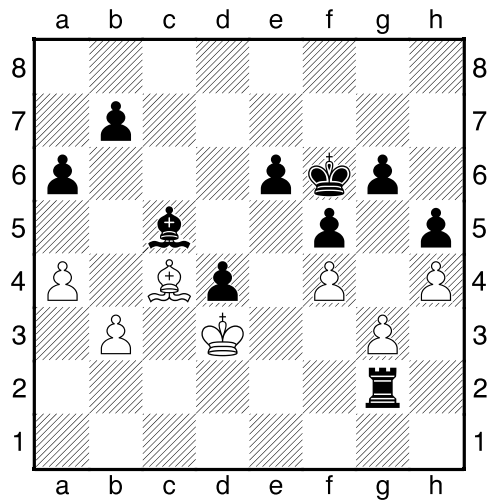
43.Lc4 Th1 [43...Tc3 Dit maakt het voor zwart nog eenvoudiger. 44.Ld3 Txb3 45.g4-+]

44.h4 h5 45.Kf2 [Diagram



]

45...Lc5 46.Ke2 Th2+ 47.Kd3 Tg2 [Diagram



]

[47...Tg2 48.g4 Txb3-+]

0-1